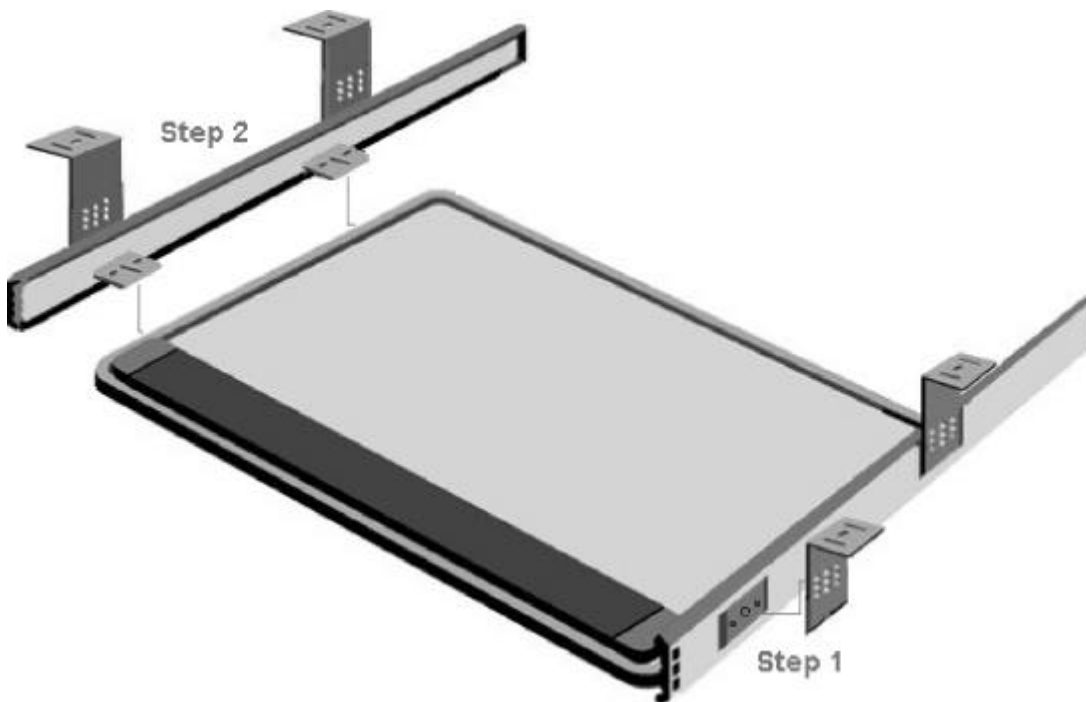


Installation Instructions

For Model FH-3 and FH-4

Part	Description	Qty.
A	Vinyl Covered Keyboard Tray	1
B	Slide Rails	2
C	Adjustable Angle Brackets	4
D	8-32 x 1/4" Machine screw	4
E	8x5/8" Self tapping Wood Screws	12



- 1) Attach the L-Brackets to the rails with the four machine screws (D) at desired height.
Note: L-Brackets may be attached facing either in or out.
- 2) Install the rails to the underside of the tray with four of the tapping screws (E).
- 3) Attach assembly to the underside of desk using the remaining eight screws (E).

Note: Mounting is simplified if you can set your table upside down, and position the tray flush with the front edge.