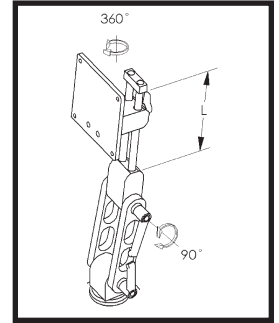


WALL MOUNT



Locate the stud and mark the top hole, drill 11/64 pilot hole and insert #14 screw and tighten slightly. Using a level, mark the two lower holes and drill pilot hole, insert the last two #14 screws, again making sure the unit is level.

NOTE 1: ICW supplies #14 Wood screws, if installing onto metal studs, you will need to replace with proper metal stud fasteners.



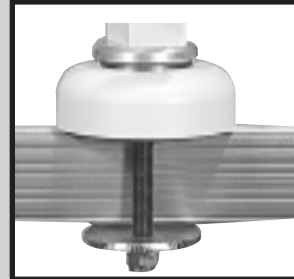
DESK MOUNT



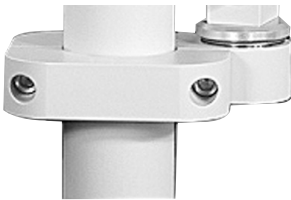
Drill a 3/8" hole through the horizontal surface and insert 3/8" set screw provided. If your desk mount doesn't have a riser tube, place the desk pad provided under the desk puck.



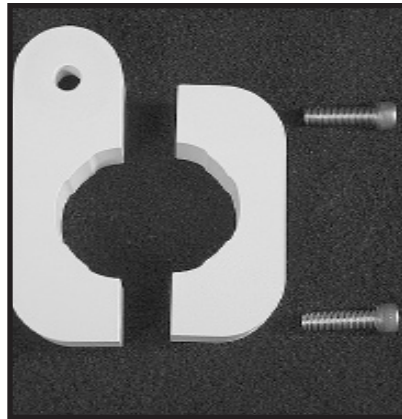
Attach washer and lock nut on the lower side of surface you are mounting to. If you are mounting to a thicker or thinner surface, the set screw provided can be replaced with standard 3/8" bolt.



POLE MOUNT



Using the 1/4" hex key wrench, disassemble the pole mount then re-assemble the pole mount around the pole at the height desired.



RADIUS MOUNT



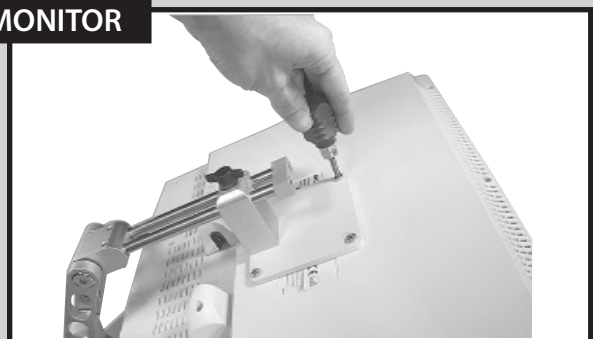
Using a 1/8" hex key wrench make sure the set screws in the radius mount are pulled out enough that the mount will easily slide down over the pole.

VESA

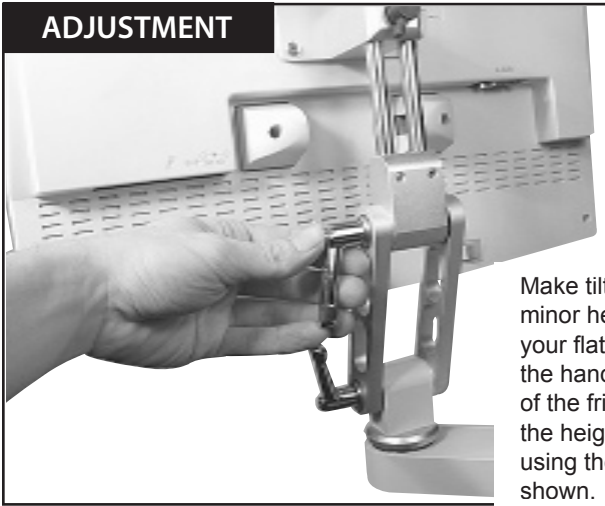


Using the 5/32" hex key wrench, attach the VESA plate to the friction mount. **To mount the monitor lower** you can also mount the VESA upside down with the screw holes at the top. Using a phillips screw driver, attach the VESA plate to the back of your LCD monitor.

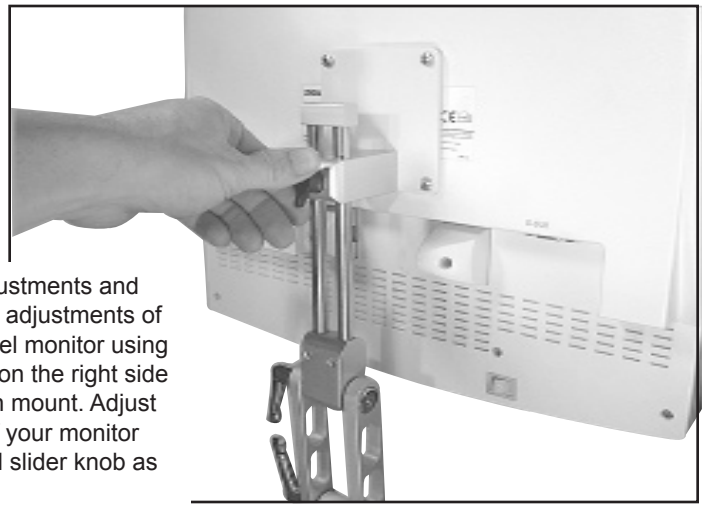
MONITOR



ADJUSTMENT

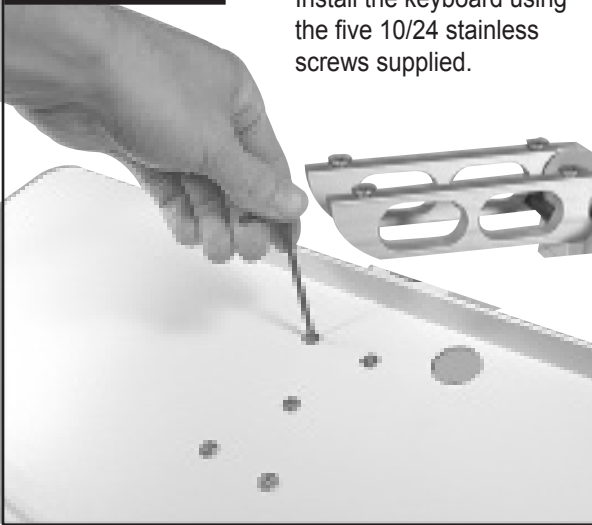


Make tilt adjustments and minor height adjustments of your flat panel monitor using the handles on the right side of the friction mount. Adjust the height of your monitor using the rail slider knob as shown.

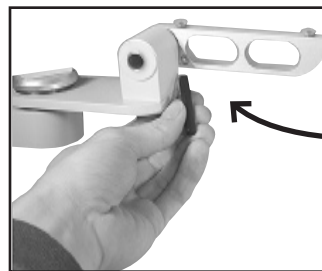
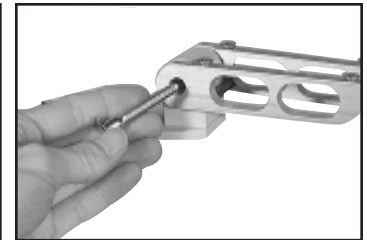


KEYBOARD

Install the keyboard using the five 10/24 stainless screws supplied.



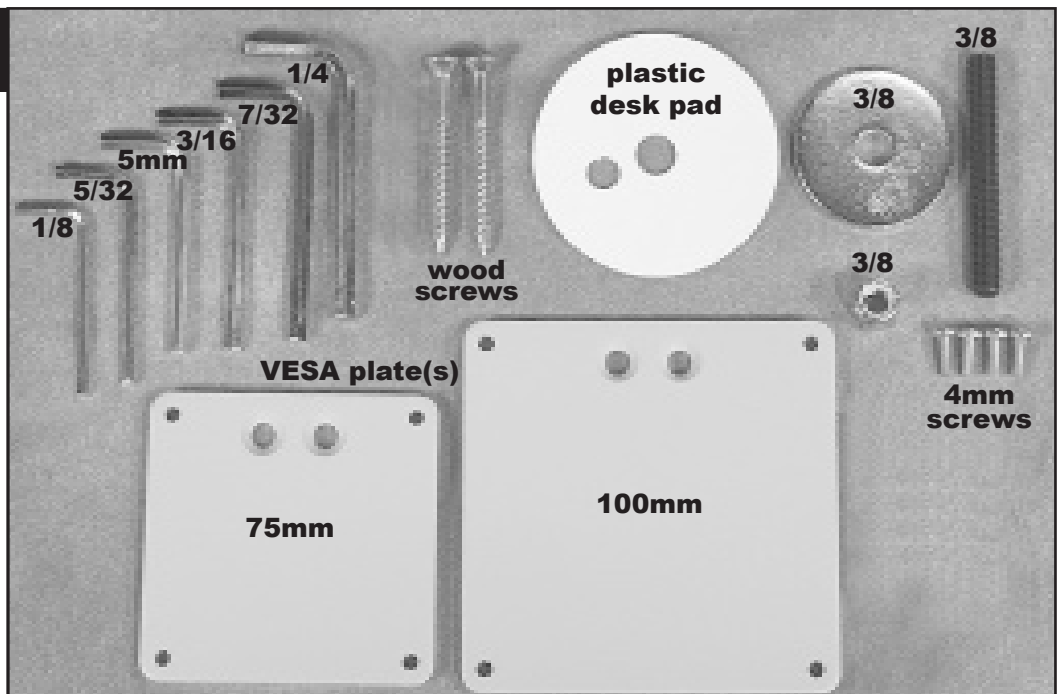
KEYBOARD FLIP



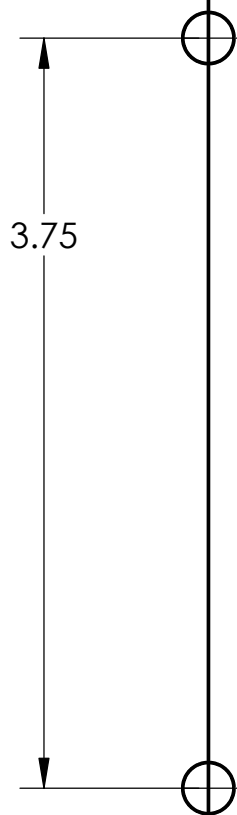
You can make your keyboard flip-up / fold down by taking out the stop pin as shown.

Included hardware:

- 1/8" hex key wrench (radius mount only)
- 5/32" hex key wrench
- 5mm hex key wrench
- 3/16" hex key wrench (desk mount only)
- 7/32" hex key wrench
- 1/4" hex key wrench (pole mount only)
- 2 wood screws (wallmount only)
- Round plastic desk pad (desk mount only)
- 3/8" set screw (desk mount only)
- 3/8" nylon lock nut (desk mount only)
- 3/8" ID large washer (desk mount only)
- 4 - 4mm screws with Phillips drive
- VESA plate(s)



HOLE
TEMPLATE
FOR
UL65
UL90
UL110
ULTRA-
KEYBOARD
WALL
MOUNT



LEVEL LINE

HOLE
TEMPLATE
FOR
UL90, 110, 210, 300
DESK
MOUNT

