

CORPORATE COLOR PROGRAM



High Pressure Laminates (HPL)

All high pressure laminates are available on the following product lines: VariTask®, TransAction, TechWorks, Maytrix™, CSII, Talon™, Meeting Plus™, Flip -N-Go™, T-Mate, Periscope™, Geneva, and Mailflow Systems®.

HPL's are shown with standard, default edging color and profile. Edging and HPL colors can be mixed and matched at no additional charge but available only on written request. Additional T-Mold profiles are available on training tables. See price list for details.

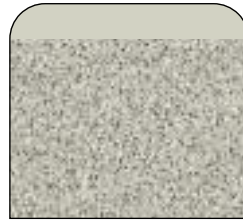
Over 400 additional Wilsonart® and Nevamar® standard HPL's available at no additional upcharge. Maximum 4-week production lead time may apply. Note: Premium laminates are excluded, contact a Mayline Group customer service representative for a quote.



*Nebula Graphite
(Black)*



*Storm Gray Matrix
(Black)*



*Nebula Gray
(Ice Gray)*



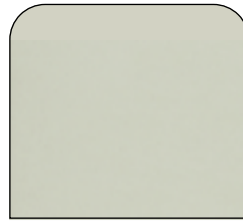
*Shadow
(Black)*



*Smoke Essence
(Warm Gray)*



*Windswept Pewter
(Warm Gray)*



*Fashion Gray
(Ice Gray)*



*Pepperdust
(Black)*



*Dreamy Allusion
(Black)*



*Bronze Legacy
(Taupe)*



*Alpine Essence
(Warm Gray)*



*Classic Rock
(Taupe)*



*Crown Cherry
(Black)*



*Pearwood
(Black)*



*Sidewalk Cafe
(Taupe)*



*White Essence
(Ice Gray)*



*Mahogany
(Black)*



*Maple
(Black)*



*Oak
(Taupe)*

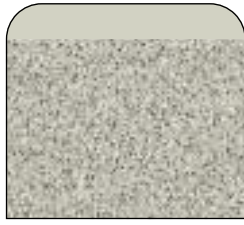


*Gray ESD
TechWorks™ & Maytrix™ only
(Black)*

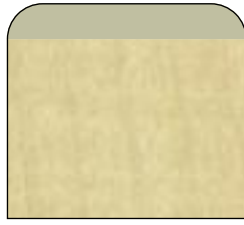
Thermally-Fused Laminates (TFL)

All thermally-fused laminates are available on the following product lines: VariTask®, TechWorks, Maytrix™, and Mailflow Systems®, Talon™, Meeting Plus™, Flip -N-Go™ and T-Mate. Note: eLAN is available in Ice Gray only. Mailflow-to-Go™ is available in Birch with Ice Gray edging only.

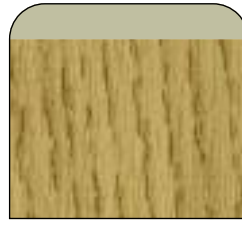
TFL's are shown with standard, default edging color. Edging and TFL colors can be mixed and matched at no additional charge but available only on written request.



*Speckled Gray Matrix
(Ice Gray)*



*Birch
(Taupe)*



*Banister Oak
(Taupe)*



*Ice Gray
(Ice Gray)*



*Fog Gray
(Warm Gray)*

Conclave/Encounter/Eastwinds/Bistro Surfaces

Encounter tables available in Folkstone and Cherry. Eastwinds available in Anthracite and Medium Cherry. Bistro available in in Anthracite, Folkstone and Mahogany with Black bases.



*Anthracite
(Black)*



*Mahogany
(Black)*



*Folkstone
(Ice Gray)*



*Cherry
(Black)*



*Anthracite/Metallic Gray Paint
(Eastwinds™ only)*



*Medium Cherry/Metallic Gray Paint
(Eastwinds™ only)*

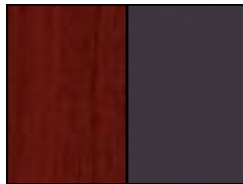
REAL Office Laminate Finishes – See Reference Chart on Back



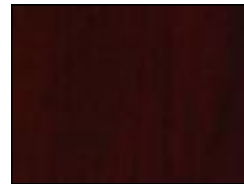
All Cherry



All Mocha



Cherry/Graphite Two-tone



Dark Cherry



Espresso

REAL Office Finishes (Veneer) – See Reference Chart on Back



*Mahogany
(Walnut)*



*Sierra Cherry
(Cherry)*



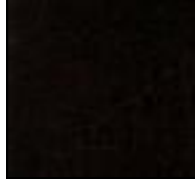
*Golden Cherry
(Beech)*



*Dark Cherry
(Cherry)*



*Bourbon Cherry
(Bird's Eye Maple)*



*Espresso Walnut/
Espresso
(Walnut)*



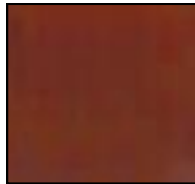
*Medium Cherry
(Cherry)*



*Cherry
(Cherry)*



*Maple
(Maple)*



*Warm Cherry
(Cherry)*



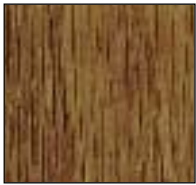
*Toffee
(Birch)*



*Honey Cherry
(Cherry)*

Wood Finishes

Available on Mayline wood plan files and wood drawing tables only.



Golden Oak



Naturalist



Unfinished



Butcher Block

Butcher Block

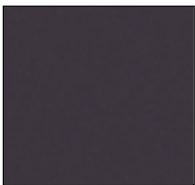
TechWorks™ benches only.

Textured Paints

Available on Mayline Network Enclosures and TechWorks only.



Textured Black



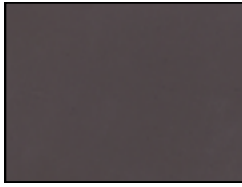
Textured Graphite

Paints

Available on the following product lines: VariTask®, TransAction, Maytrix, CSII, Meeting Plus, T-Mate, Mobile Aisle, Four Post Shelving, File Harbor Cabinets, Forms and Storage Cabinets, ARC™ Rotary Files, Steel Plan Files, Steel Drawing Tables, and Mailflow Systems®.



Black



Medium Tone



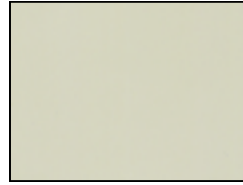
Mist



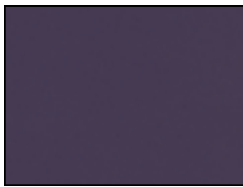
Graphite



Blue Medium



Sand



Navy



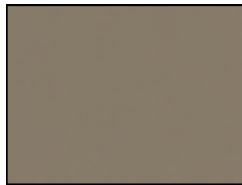
Gray



Pebble Gray



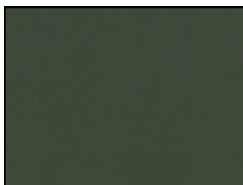
Cranberry



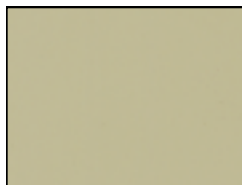
Desert Sage



Warm White



Hunter

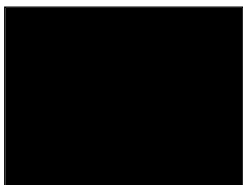


Sand Beige



White

“P” style Pedestal Finishes



Black



Light Gray



Dark Gray



Mist

Privacy & Tack Panel Fabrics

Fabrics shown are in-stock and available at a standard lead-time.

Additional Interface™ fabrics available, many at no additional upcharge. Please contact a Mayline Customer Service Representative for additional pricing and lead time information. Go to www.mayline.com for a list of our corporate color recommendations.

Over 250 additional fabrics available at no additional upcharge. (Maximum 4-week production lead time may apply.) Choose from any color in the following Interface fabric styles: Anchorage, Crosstown, Hopscotch, Lido, Mingle, Spinel, Bailey, Belgrade, Coastline, FR701, Lucida, Orissa, Regatta, Sandpiper, Streetwise, Vertical Surface Heather and Zirconia.



Spinel/Tiger Eye



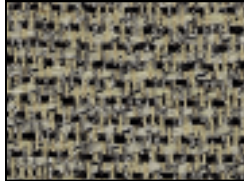
Spinel/Sandstone



Spinel/Guilden



Lido Balboa



Lido Heartland



Lido Bryce Canyon



Mingle Crystal



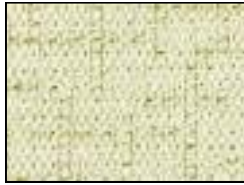
Mingle Khaki



Mingle Biscuit



Crosstown Buff



Crosstown Ray



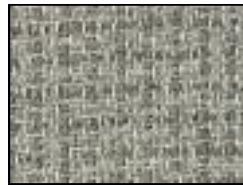
Crosstown Fieldstone



Anchorage Goose



Bailey Khaki



Hopscotch Field Stone

Ultimo/Mercado/Big & Tall/Lounge Leathers

For Mercado veneer selections see REAL Office Veneers.



Black
(Big & Tall/Lounge available
in Black Leather only)



Burgundy



Saddle
(available on Ultimo
Series only)



Gray



Blue



Burgundy



Black

Technical Series/Stackable Fabrics



Black/Charcoal



Gray



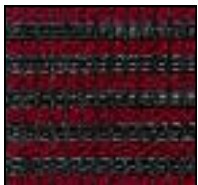
Burgundy



Navy/Blue

Valoré Training Seating Fabrics

All Valoré Training Seating comes standard with a Black fabric seat with your choice of mesh fabric back.



Red



Burgundy



Black



Orange



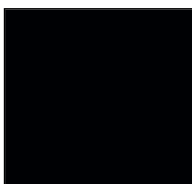
Black Seat Fabric

Bistro Seating Finishes

Bistro Dining Chairs and Bar Stools available in Chestnut or Black Finish with Black Vinyl seat.



Chestnut



Black



Black Vinyl

MERCADO WOOD SEATING FINISH REFERENCE

	Sierra Cherry/ Black	Mahogany/ Black	Golden Cherry Black	Bourbon Cherry/ Black	Espresso/ Black	Espresso/ Cream	Medium Cherry/ Black	Maple/ Black
VSCA	•	•	•	–	–	–	•	•
VSC2A	•	•	•	–	•	–	–	–
VSC3A	•	–	–	•	•	–	•	•
VSC4A	•	•	•	–	•	–	–	–
VSC5A	•	•	•	•	–	•	–	–
VSC6A	•	•	•	–	–	–	–	–
VSC7A	•	•	•	–	–	•	–	–
VSC8A	•	•	•	•	–	–	–	–
VSC9	•	•	•	•	–	–	–	–

CASEGOODS FINISH REFERENCE

	VENEER											LAMINATE				
	Sierra Cherry	Mahogany	Bourbon Cherry	Toffee	Espresso	Espresso Walnut	Cherry	Golden Cherry	Medium Cherry	Warm Cherry	Maple	Mocha	Cherry	Two-Tone Cherry/Graphite	Espresso	Dark Cherry
Aberdeen	–	–	–	–	–	–	–	–	–	–	–	•	•	•	–	–
Brighton	–	–	–	–	–	–	–	–	–	–	–	•	•	–	–	–
Corsica	•	•	–	–	–	–	–	–	–	–	–	–	–	–	–	–
Eclipse	–	–	–	–	–	•	–	–	–	•	–	–	–	–	–	–
Liminary	–	–	–	–	–	–	•	–	–	•	–	–	–	–	–	–
Mira	–	–	–	–	–	–	–	•	–	–	–	–	–	–	–	–
Napoli	•	•	–	–	–	–	–	•	–	–	–	–	–	–	–	–
Sterling	–	–	–	–	–	–	–	–	–	–	–	–	–	–	•	•
Sorrento	–	–	•	–	•	–	–	–	–	–	–	–	–	–	–	–
Stella	–	–	–	•	–	–	–	–	–	–	–	–	–	–	–	–
Toscana	•	•	–	–	–	–	–	–	–	–	–	–	–	–	–	–

CORPORATE LOCATIONS

MAYLINE COMPANY, LLC
619 N. COMMERCE STREET
PO BOX 728
SHEBOYGAN, WI 53082-0728
CUSTOMER SERVICE 800-822-8037
920-457-7388 (FAX)

KWIK-FILE, LLC
490 NORTHCO DRIVE NE
MINNEAPOLIS, MN 55432
CUSTOMER SERVICE 800-822-8037
920-457-7388 (FAX)

TO PLACE ORDERS:
MAYLINE GROUP
ATTN: ORDER DESK
PO BOX 728
SHEBOYGAN, WI 53082-0728
800-822-8037
920-457-7388 (FAX)

DISTRIBUTION CENTERS

NORTHERN CALIFORNIA
468 SOUTH ABBOT AVENUE
MILPITAS, CA
408-627-4331

ARKANSAS
824 NORTH PALM STREET
NORTH LITTLE ROCK, AR
800-480-3123

SHOWROOM LOCATIONS

CHICAGO
MERCHANDISE MART, SUITE 1147
CHICAGO, IL
847-952-1213

NEW YORK
200 LEXINGTON AVE., SUITE 1307
NEW YORK, NY
212-684-7788

LOS ANGELES
12015 MORA DR., UNIT 1
SANTE FE SPRINGS, CA
562-903-7090

DALLAS
4885 ALPHA RD., SUITE 155
FARMERS BRANCH, TX
817-481-2600

HOUSTON
1205 W. LOOP NORTH, SUITE 100
HOUSTON, TX
713-688-7216

WASHINGTON D.C.
1738 ELTON RD., SUITE 304
SILVER SPRING, MD
301-408-0600

ATLANTA
2030 POWERS FERRY RD., SUITE 230
ATLANTA, GA
770-984-9047

BOSTON
850 SUMMER STREET
BOSTON, MA
617-269-7600

DETROIT
2384 FRANKLIN ROAD
BLOOMFIELD HILLS, MI
248-745-9990

ST. LOUIS
3204 MORGAN FORD ROAD
ST. LOUIS, MO
314-771-6696

DENVER
601 S. BROADWAY, SUITE I
DENVER, CO
303-738-1001

PORTLAND
1001 SE WATER AVE., SUITE 400
PORTLAND, OR
503-222-2364

SEATTLE
829 S. FIDALGO
SEATTLE, WA
206-767-0412

CINCINNATI
2226 GILBERT AVENUE
CINCINNATI, OH
513-221-4800

NORTHERN CALIFORNIA
2528 QUME DR., SUITE 6
SAN JOSE, CA
415-637-5939

TORONTO
200 COCHRANE DR., UNIT 4
MARKHAM, ONT
CANADA
905-475-0115

VANCOUVER
110-4611 #6 ROAD
RICHMOND, BC
CANADA
604-272-4401

MAYLINE® GROUP

www.mayline.com

YGP2B 10/09

Product finishes that are shown are reproduced as faithfully as possible within the limitations of the printing process.