

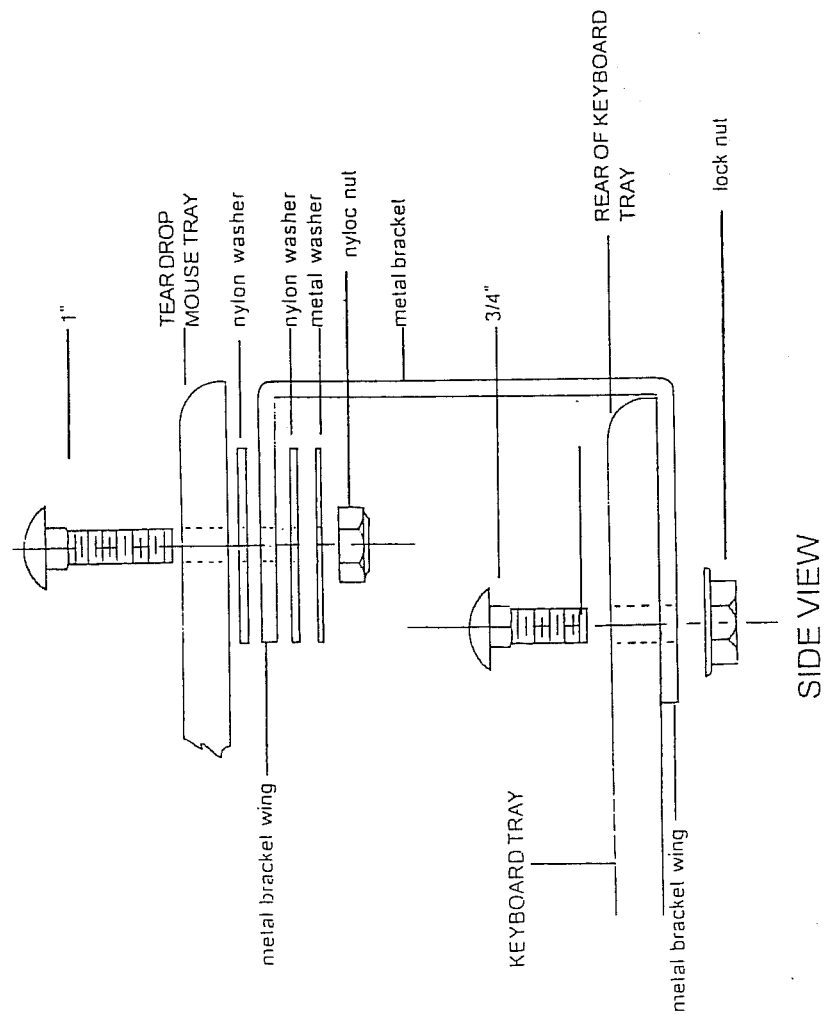
MOUSE OVER ASSEMBLY INSTRUCTIONS

MOUNTING BRACKET TO TRAY

THE METAL BRACKET WING IS DESIGNED TO ATTACH TO A PHOENOLIC OR WOOD PLATFORM. THE ILLUSTRATION SHOWS CONNECTING IT TO A PHOENOLIC PLATFORM. IF CONNECTION TO A WOOD PLATFORM THEN SUBSTITUTE 3/4" BOLT AND NUT WITH 3 5/8" WOOD SCREWS.

THE METAL BRACKET WING MAY BE INSTALLED ON EITHER THE REAR OR THE SIDE OF WOOD PLATFORM.

NOTE: THE BOTTOM OF THE METAL BRACKET WING THAT IS INSTALLED UNDER THE PLATFORM HAS 3 HOLES IN IT.



SVL-500

(bolt through mount shown - for wood keyboard trays attach with wood screws that are provide)

